

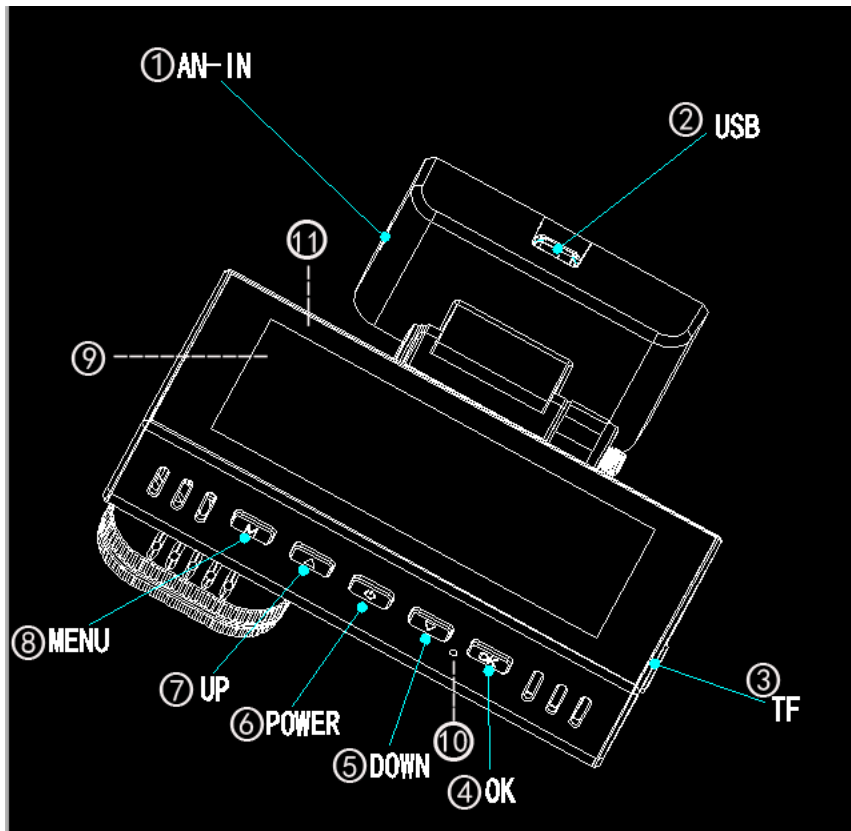
HD Driving Recorder



Manual Instruction

This product provides HD videos and seamless dynamic pictures with high-performance chip. It has passed the certification of EU CE and US FCC, and supports HD1080P video. Please carefully read this manual before use and keep it properly. This product is hoped to meet your requirements and serve you for a long time.

I. Description of Appearance and Key Function



1. AV-IN interface 2. USB interface 3. TF card slot 4. OK key 5. Down key 6. Power key 7. Up key 8. Mode/menu key 9. Touch TP 10. Microphone port 11. Reset key

Power key

Function I: Startup & Shutdown function

In startup state, long press [power key] for 2 seconds to start the power. The machine automatically starts work.

In shutdown state, long press [power key] for 2 seconds. The machine automatically records video files and user settings and shuts down.

Function II: close the display screen

In startup state, press [power key] to turn off the display screen and press again to turn on the display screen.

Mode key

Function: mode function

In standby state, short press [mode key] to switch between different modes (video/photograph/playback).

OK key

Function I: start/close video function

In recording mode, short press [OK key] to start recording and short press [OK key] to stop recording.

Function II: photograph key

In photograph mode, short press [OK key] to photograph.

Function III: file play key

In file browse mode, short press [OK key] to play video.

Function IV: OK key

In standby recording mode/photograph mode/playback mode: press [menu key] to enter menu mode, short browse [up key/down key] to browse and short press [OK key] to confirm.

Down key

Function: page down function

Page down function in menu setting and playback mode.

Up key

Function I: page up function

Page up function in menu settings and playback mode.

Function II: camera switch function

After access to the external rear camera, the dual camera is automatically displayed. In video mode, short press [up key] to switch among multiple display modes - front camera, picture in picture and rear camera display; in photo mode, short press [up key] to switch between front camera and rear camera.

Menu key

Function: menu function

In standby state, short press [menu key] to enter the main menu function setting table, short press [up key] or [down key], select the option that needs to be set, short press [OK key] to confirm. After setting up, long press [menu key] to exit menu setting function. (Menu settings are the same in video mode, photography mode and playback mode).

Touch TP

Click touch TP alternative button in case of no button operation.

(1) Recording interface



Function I: slide the left 1/3 part of the screen up and down to adjust the camera window range

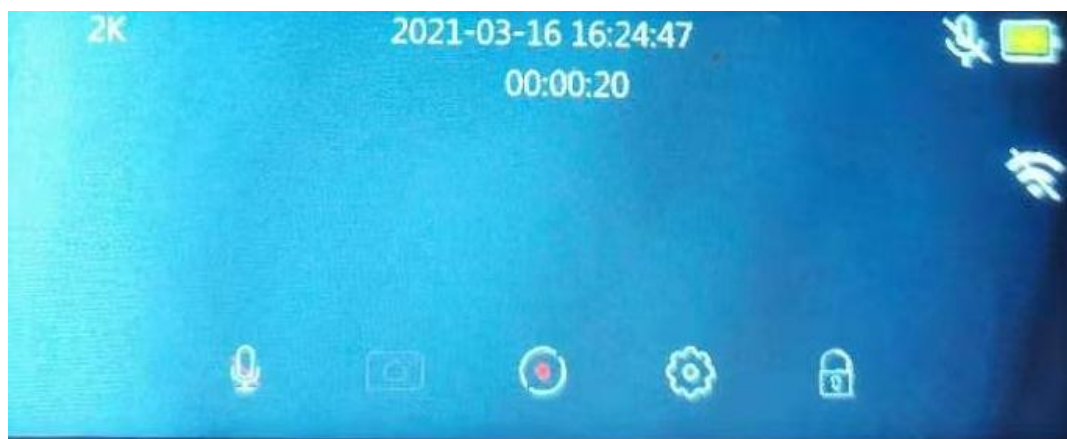
Function II: slide the right 1/3 part of the screen up and down to adjust the screen brightness

Function III: slide 1/3 part of the screen to enter the settings interface

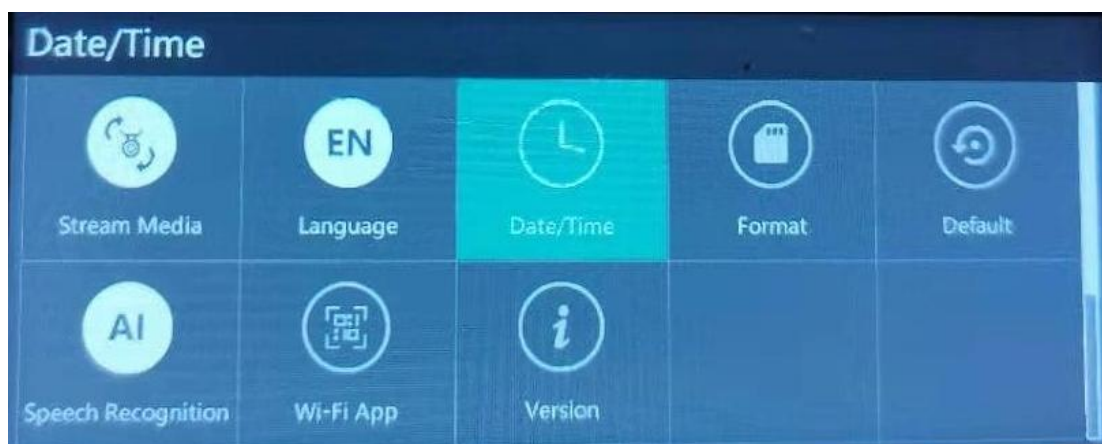
Function IV: the screen slides from right to left to switch the front and rear windows

Function V: the screen slides from left to right to enter the playback interface

(2) Photography interface



(3) Setting menu interface



(4) Video playback



II. Installation Guide

1. Turn off the car engine.

2.Insert the TF card into the slot of the recorder.

[Note] Please use high speed TF card (above Class10) with capacity not less than 8GB. TF card can support 128 GB at most.

3.Fix the recorder to the original rearview mirror of the car.

4.Insert car charger into car cigarette lighter.

5.Connect the USB interface of the recorder and the car charger with the charging extension line.

[Note] The charging extension line can be laid along the edge of the car windshield.

6.Install the rear camera in the rear of the vehicle, pay attention to the direction when installing. Wiring can be laid along the vehicle ceiling. Connect the rear plug to the recorder rear camera interface after installation.

7.Adjust the lens position to ensure that the lens remains level with the ground.

8.Start the engine and check that the machine is installed correctly.

[Note] When the machine is installed correctly, the system work indicator lights up; the machine starts into the recording state, and the video indicator lights flicker. Please check whether the picture on the display screen is normal. If the display screen is inverted, please contact us in time.

III. Function Profile

1. Use of automatic recording function

When starting the car engine, the recorder automatically starts and turns on the recording function; when closing the car engine, the recorder automatically saves the record content and shuts down the machine. Recorded image segments are stored on TF card and the recorder will overwrite earlier recorded images when TF card is full. The recorded time period can be set in the menu by itself, and the range is 1 minute/3 minutes/5 minutes.

[Note] If you select any of "1/3/5" minutes, the recorder will overwrite earlier recorded images when TF card is full;

The ordinary folder of front route is "front_norm"; the ordinary folder of back route is "back_norm"

The locking folder of front route is "front_emr"; the locking folder of back route is "back_emr"

The photography folder of front route is "back_photo"; the photography folder of back route is "front_photo"

2. Use of manual recording function

Press the recorder [power key]. After the recorder starts, press OK key to start the video recording. The video small dot flashes and shows the recording time. To shut down, long press [power key] for 2 seconds, and the recorder can automatically save the record and shut down.

3. Collision sensing function

This machine has a G-sensor inside. In case of a serious vehicle collision, the recorder will lock the accident when this video is saved as a special image, while the upper left corner of the display screen display lock icon. The locked image is not covered by the loop.

[Reminder]

b. Collision sensor (G-sensor) supports sensitivity adjustment and can change the settings in the setting menu according to actual needs.

4. Date and time setting

In the video or standby state, the middle 1/3 part of the screen slides into the setting interface or click the settings button to select the date settings. Adjust the date and time by sliding up and down.

[Note] In order to effectively record the date and time of evidence collection of traffic safety accidents, please set the correct time before using this machine.

5. One-key mute function

In the working state, click on the screen recording key and the microphone on the screen changes into a forbidden icon, indicating that the video recording function has been turned off. At this time, the recorder only records the image but not the sound. Click the recording button again when the screen microphone into the recording icon, indicating the recovery of recording function.

[Reminder] The settings will be saved automatically. There is no need to set mute function after startup.

6. Video playback

In the startup state, in the recording and photographing interface, press the mode key to enter the playback interface.

7. Reverse view

First, the car recorder must be connected to the recorder, and the red wire on the cable camera is connected to the reversing lamp. The car charging machine will automatically start the video recording state. In any state, if there is reversing, the reversing image will be displayed. The machine will automatically return to the video mode after the end of reversing visual mode.

8. Parking monitoring

When turning on the stop monitoring function, if the car has a slight vibration (the trigger sensitivity can be set as needed in the menu) in the shutdown state, then the recorder will automatically turn on the video for 20 seconds and then turn off the machine.

9. License plate number function

Select the license plate number to enter the license plate setting interface, then press [OK key] to set the license plate. Press [up key] and [down key] to select the character number to be changed, select [OK key] to jump to the next digit setting, and press [OK key] again after the last bit setting to confirm the license plate number to be changed.

IV. Product Specifications

Built-in image sensor	200W
Rear camera resolution	1920*1080
Lens angle	130 degrees
Video resolution	2560*1440 and 1920*1080
Storage Compression	H.265
Video format	MP4
Touch TP	Support single touch
Storage temperature	-30°C~80°C
Operating temperature	-20°C~70°C
Operating humidity	15-65%RH
Capacity of storage card	Maximum support 128G
Standard voltage	DC5V

V. WiFi connection instructions

WiFi is built into the machine, which is turned off by default and turned on manually by clicking. Turn on the mobile wifi, search the local hotspot name to connect. (click settings to find the mobile Internet, which has the local hotspot name) the default password is 12345678. After connecting the mobile phone with the hot spot of the machine, open the roadcam app and perform a series of operations on the app.

WiFi app download link:



RoadCam